

Annexure E

The union government (MoEFCC, GoI) constituted Gadgil Committee, known as WGEEP or Western Ghats Ecology Expert Panel to identify ecological sensitive areas. Objectives of this research panel were to study the present-day condition of the Western Ghats regarding of ecology of Western Ghats region, to distinguish Ecologically Sensitive Areas (ESA) within the Western Ghats, to make recommendations for Western Ghats conservation, protection, and rejuvenation (Gadgil et al., 2011). WGEEP has submitted a report to the government of India on 31 August 2011. This panel assigned an entire hilly range of Western Ghats as an ecologically sensitive area by considering different parameters such as biological features like habitat, cultural and historical significance. According to this report, 142 taluks in the Western Ghats consider into the ecologically sensitive zones 1, 2, 3 and restricted the all developmental activities like mining, thermal power plants etc. Figure 55 shows ESA map as per Gadgil report. The report highlights, taluks such as Belthangadi, Sulya, Karkala, Madikeri, Somwarpet, Mudigeri, Sakleshpur as ESA 1 and Puttur as ESA 3. The taluks such as Mangalore, Bantwal are not assigned any status.

Dr. K. Kasthurirangan with researchers of 10 members of the high-level working group (HLWG) has been formed by MoEFCC to prepare a report on Western Ghats to retard the agitations raised for Gadgil committee report. The Objectives of this research committee were a present-day condition of the Western Ghats regarding vegetation, endemism, rainfall, deforestation, Ecological sensitive regions, population density, the area under the natural and cultural landscapes, the number of villages and taluks under Western Ghats region in the different states (Kasthurirangan, 2013). They followed geospatial analysis for the identification of Ecologically Sensitive Zones (ESZ). According to Kasthurirangan committee only 60,000 sq.km (37%) of the natural landscape the total area the Western Ghats, be brought under ESZ. That ESZ area having a high biological richness and low fragmentation and low population density, Protected areas (PAs), World Heritage Sites (WHSs), Tiger and elephant corridors. They recommended a non-tolerance policy with respect to the banning of complete mining, quarrying and polluting industries in the ESZ region. This report was prepared to satisfy pro developers, industrialists, natural resource exploiters than conservation of biodiversity and habitat. Figure 56 depicts the villages considered for ESZ notification as per HLWG. The WGEEP had adopted holistic way of

assigning ESAs than HLWG, which can be perceived from Figure I, II. Annexure E highlights the village wise ecological sensitive regions status as per WGEEP, HLWG and IISc_ENVIS (current approach) reports (Table a).

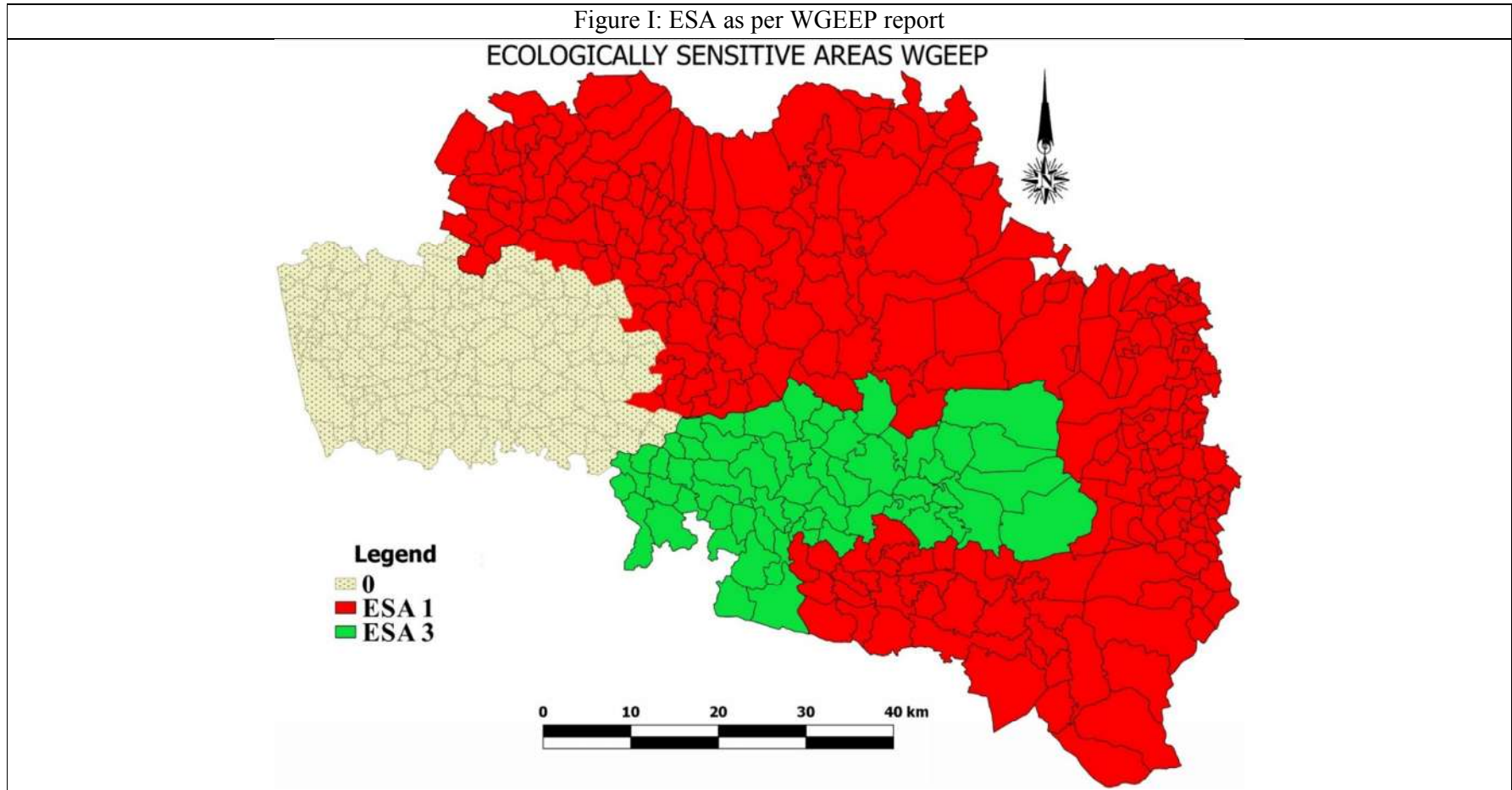


Figure II: ESZ assigned as per HLWG report

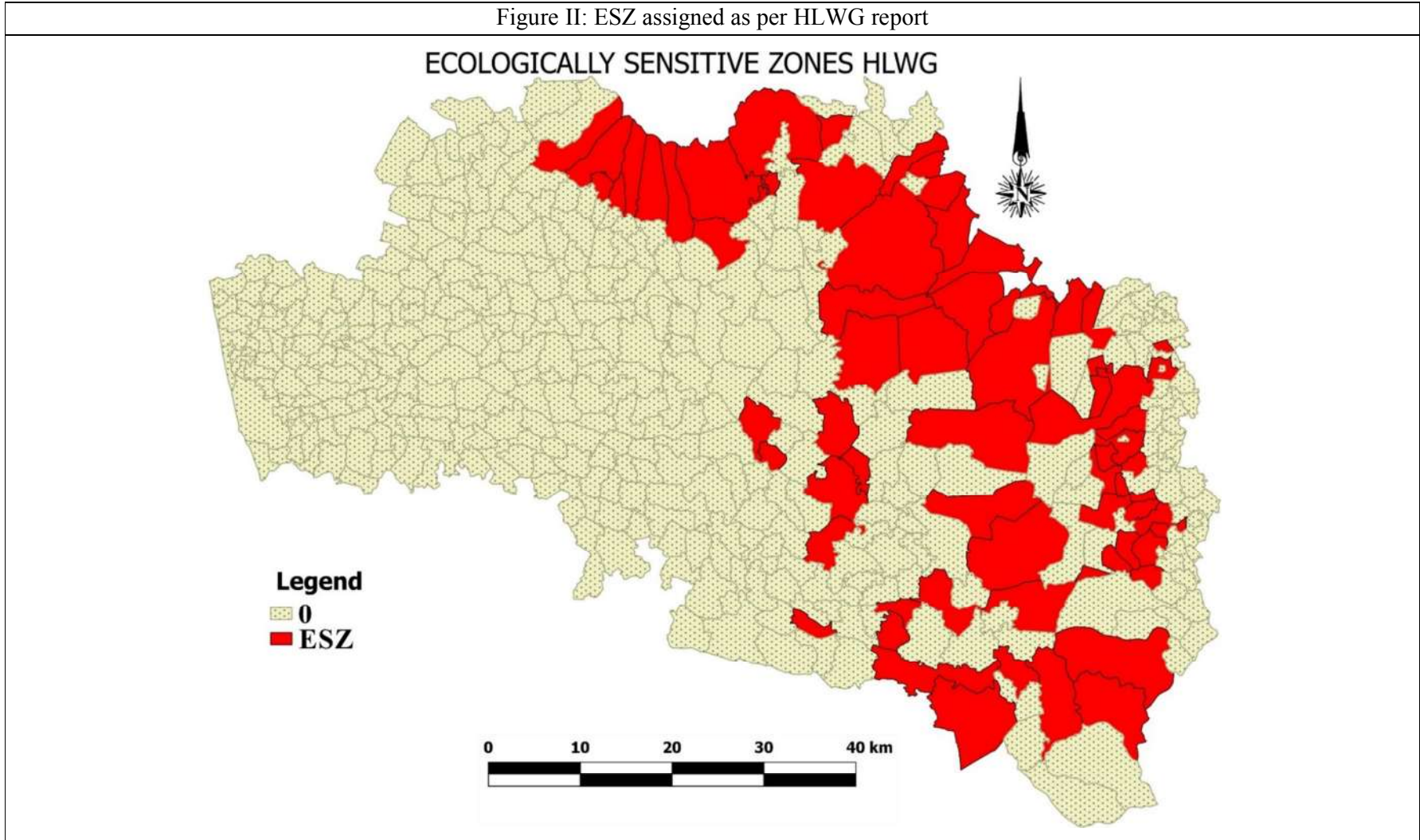


Figure II: ES villages as per the current work (IISc-ENVIS)

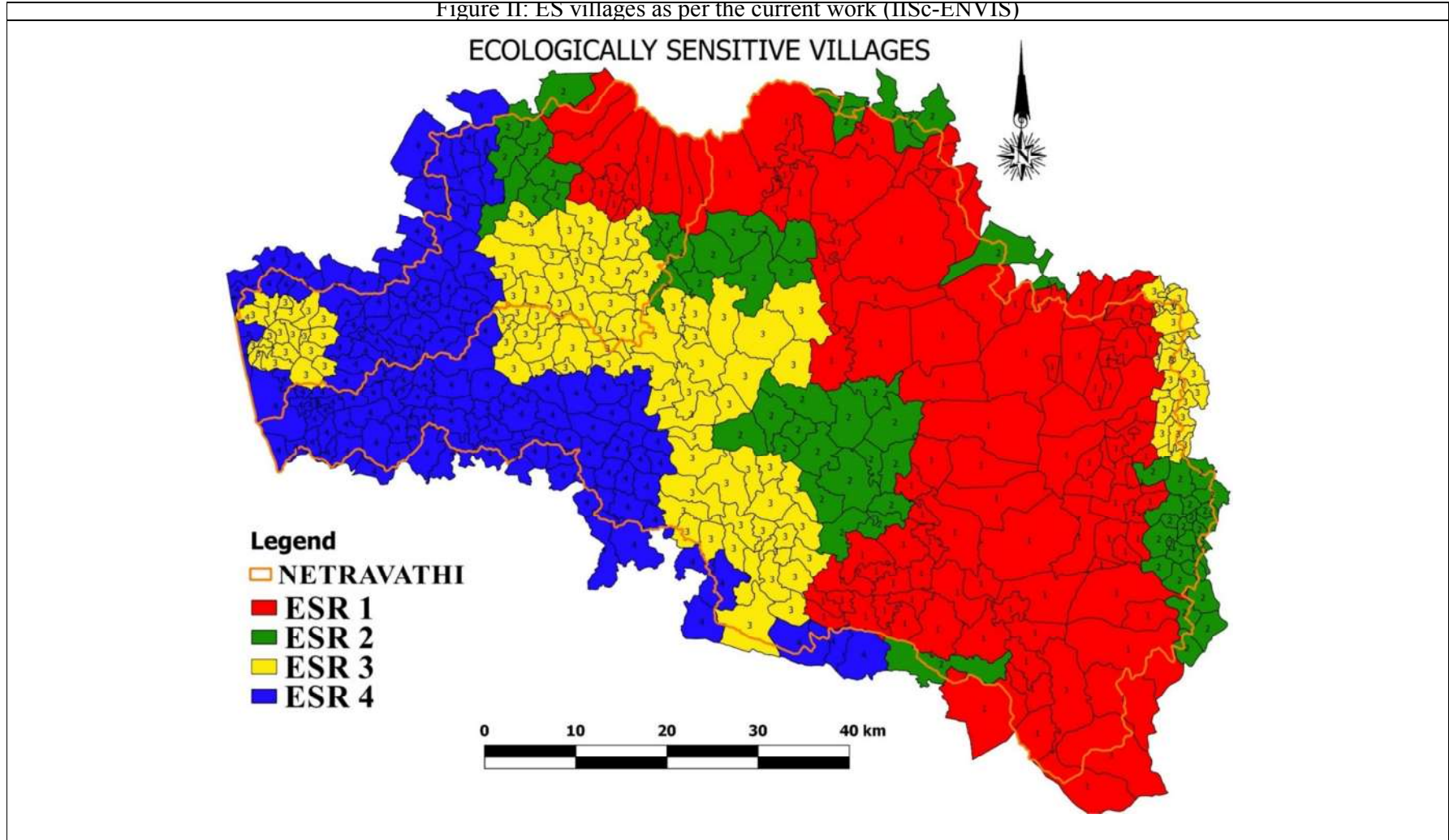


Table a: Village wise ESR based on the various reports

SNO	DISTRICT	TALUK	LOCATION	AREA	ESA_WGEEP	ESZ_HLWG	ESR_ IISc_ENVIS
1	Dakshina Kannada	Belthangadi	Malavanthige	6483.25	1	1	1
2	Dakshina Kannada	Belthangadi	Naravi	2774.13	1	1	1
3	Dakshina Kannada	Belthangadi	Kuthlur	2645.25	1	1	1
4	Dakshina Kannada	Belthangadi	Sulkerimogru	1773.03	1	1	1
5	Dakshina Kannada	Belthangadi	Mithabagilu	968.64	1	0	1
6	Dakshina Kannada	Belthangadi	Shirlal	2494.24	1	1	1
7	Dakshina Kannada	Belthangadi	Navur	6134.26	1	1	1
8	Dakshina Kannada	Belthangadi	Savanalu	2320.63	1	1	1
9	Dakshina Kannada	Belthangadi	Charmadi	5645.68	1	1	1
10	Dakshina Kannada	Belthangadi	Marody	1255.42	1	0	2
11	Dakshina Kannada	Belthangadi	Kadirudyavara	1673.85	1	0	1
12	Dakshina Kannada	Belthangadi	Na	317.78	1	1	1
13	Dakshina Kannada	Belthangadi	Sulkeri	526.46	1	1	1
14	Dakshina Kannada	Belthangadi	Navara	550.05	1	1	1
15	Dakshina Kannada	Belthangadi	Savya	779.12	1	0	1
16	Dakshina Kannada	Belthangadi	Na	58.69	1	1	1
17	Dakshina Kannada	Belthangadi	Neriya	10758.3	1	1	1
18	Dakshina Kannada	Belthangadi	Kokrady	633.62	1	0	1
19	Dakshina Kannada	Belthangadi	Kashipatna	972.25	1	0	2
20	Dakshina Kannada	Belthangadi	Na	179.45	1	1	1
21	Dakshina Kannada	Belthangadi	Perady	609.41	1	0	2
22	Dakshina Kannada	Belthangadi	Nadabettu	882.10	1	0	1
23	Dakshina Kannada	Belthangadi	Kokrady	395.43	1	0	1

24	Dakshina Kannada	Belthangadi	Andinje	1409.63	1	0	3
25	Dakshina Kannada	Belthangadi	Pilya	359.11	1	0	1
26	Dakshina Kannada	Belthangadi	Badekody	601.95	1	0	3
27	Dakshina Kannada	Belthangadi	Badagakarandur	506.31	1	0	3
28	Dakshina Kannada	Belthangadi	Hosangady	2045.87	1	0	3
29	Dakshina Kannada	Belthangadi	Mudukody	903.77	1	0	3
30	Dakshina Kannada	Belthangadi	Nada	1886.87	1	1	2
31	Dakshina Kannada	Belthangadi	Karambar	766.92	1	0	2
32	Dakshina Kannada	Belthangadi	Kanyady	940.62	1	0	2
33	Dakshina Kannada	Belthangadi	Chibidre	2168.46	1	0	1
34	Dakshina Kannada	Belthangadi	Nalkur	978.49	1	0	3
35	Dakshina Kannada	Belthangadi	Mundaje	1528.01	1	0	2
36	Dakshina Kannada	Belthangadi	Tenkakarandur	745.11	1	0	2
37	Dakshina Kannada	Belthangadi	Tottatadi	1105.31	1	0	1
38	Dakshina Kannada	Belthangadi	Balanja	664.43	1	0	3
39	Dakshina Kannada	Belthangadi	Melanthabettu	982.19	1	0	2
40	Dakshina Kannada	Belthangadi	Layla	1882.14	1	0	2
41	Dakshina Kannada	Belthangadi	Nittade	627.77	1	0	3
42	Dakshina Kannada	Belthangadi	Arambody	1995.11	1	0	3
43	Dakshina Kannada	Belthangadi	Ujre	2702.64	1	0	2
44	Dakshina Kannada	Belthangadi	Gunduri	463.08	1	0	3
45	Dakshina Kannada	Belthangadi	Venur	286.94	1	0	3
46	Dakshina Kannada	Belthangadi	Padangadi	1148.02	1	0	3
47	Dakshina Kannada	Belthangadi	Kalmanja	1211.23	1	0	2
48	Dakshina Kannada	Belthangadi	Bajre	989.00	1	0	3
49	Dakshina Kannada	Belthangadi	Gardadi	1074.89	1	0	3
50	Dakshina Kannada	Belthangadi	Kukkedi	874.17	1	0	3

51	Dakshina Kannada	Belthangadi	Kuvettu	998.71	1	0	2
52	Dakshina Kannada	Belthangadi	Belthangady	898.98	1	0	2
53	Dakshina Kannada	Belthangadi	Puduvettu	3626.91	1	1	1
54	Dakshina Kannada	Belthangadi	Koyyuru	2416.04	1	0	3
55	Dakshina Kannada	Belthangadi	Sonanduru	539.90	1	0	3
56	Dakshina Kannada	Belthangadi	Dharmastala	3025.97	1	0	3
57	Dakshina Kannada	Belthangadi	Vadilnala	974.10	1	0	3
58	Dakshina Kannada	Belthangadi	Maladi	1013.46	1	0	3
59	Dakshina Kannada	Belthangadi	Kaliya	1007.41	1	0	3
60	Dakshina Kannada	Belthangadi	Shishila	4892.95	1	1	1
61	Dakshina Kannada	Belthangadi	Belala	2866.04	1	0	3
62	Dakshina Kannada	Belthangadi	Kalanja	5039.68	1	1	1
63	Dakshina Kannada	Belthangadi	Machina	2232.27	1	0	3
64	Dakshina Kannada	Belthangadi	Parenki	913.38	1	0	3
65	Dakshina Kannada	Belthangadi	Kukkala	682.76	1	0	3
66	Dakshina Kannada	Belthangadi	Nyayata RF	516.86	1	0	3
67	Dakshina Kannada	Belthangadi	Nidle	2411.35	1	0	1
68	Dakshina Kannada	Belthangadi	Kaniyoor	1846.76	1	0	3
69	Dakshina Kannada	Belthangadi	Patrame	1814.82	1	0	3
70	Dakshina Kannada	Belthangadi	Bandaru	2026.61	1	0	3
71	Dakshina Kannada	Belthangadi	Thannirpantha	1325.49	1	0	3
72	Dakshina Kannada	Belthangadi	Uruval	1257.24	1	0	3
73	Dakshina Kannada	Belthangadi	Shibaje	3660.65	1	0	1
74	Dakshina Kannada	Belthangadi	Puthila	866.80	1	0	4
75	Dakshina Kannada	Belthangadi	Kokkada	2370.89	1	0	2
76	Dakshina Kannada	Belthangadi	Hathyadka	1381.81	1	0	2
77	Dakshina Kannada	Belthangadi	Karaya	961.76	1	0	3

78	Dakshina Kannada	Belthangadi	Barya	991.73	1	0	4
79	Dakshina Kannada	Belthangadi	Mogru	1037.48	1	0	3
80	Dakshina Kannada	Belthangadi	Ilanthila	1527.98	1	0	3
81	Dakshina Kannada	Belthangadi	Rekya	2474.78	1	0	2
82	Dakshina Kannada	Belthangadi	Thekkar	724.91	1	0	4
83	Dakshina Kannada	Mangalore	Badagayedapadavu	1028.80	0	0	4
84	Dakshina Kannada	Mangalore	Kuthethur	795.13	0	0	4
85	Dakshina Kannada	Mangalore	Permude	775.12	0	0	4
86	Dakshina Kannada	Mangalore	Kolambe	1793.82	0	0	4
87	Dakshina Kannada	Mangalore	Tenkayedapadavu	1210.93	0	0	4
88	Dakshina Kannada	Mangalore	Idya	641.25	0	0	4
89	Dakshina Kannada	Mangalore	Muduperar	912.77	0	0	4
90	Dakshina Kannada	Mangalore	Bajpe	760.46	0	0	4
91	Dakshina Kannada	Mangalore	Bala	565.97	0	0	4
92	Dakshina Kannada	Mangalore	Kalavar	320.70	0	0	4
93	Dakshina Kannada	Mangalore	Badagaulipadu	837.71	0	0	4
94	Dakshina Kannada	Mangalore	Kilanjara	477.43	0	0	4
95	Dakshina Kannada	Mangalore	Hosabettu	225.52	0	0	4
96	Dakshina Kannada	Mangalore	Panambur	917.12	0	0	4
97	Dakshina Kannada	Mangalore	Muthur	332.43	0	0	4
98	Dakshina Kannada	Mangalore	Malavoor	626.54	0	0	3
99	Dakshina Kannada	Mangalore	Thokur	557.68	0	0	3
100	Dakshina Kannada	Mangalore	Mogar	477.26	0	0	4
101	Dakshina Kannada	Mangalore	Kolavoor	418.89	0	0	4
102	Dakshina Kannada	Mangalore	Kenjar	185.80	0	0	3
103	Dakshina Kannada	Mangalore	Kenjar	513.96	0	0	3
104	Dakshina Kannada	Mangalore	Kandavara	564.38	0	0	4

105	Dakshina Kannada	Mangalore	Baikampadi	631.62	0	0	3
106	Dakshina Kannada	Mangalore	Adyapady	491.55	0	0	3
107	Dakshina Kannada	Mangalore	Mulur	390.57	0	0	4
108	Dakshina Kannada	Mangalore	Tenkaulipady	583.47	0	0	4
109	Dakshina Kannada	Mangalore	Padushedde	376.67	0	0	3
110	Dakshina Kannada	Mangalore	Kunjathbailu	375.40	0	0	3
111	Dakshina Kannada	Mangalore	Mudushedde	606.46	0	0	3
112	Dakshina Kannada	Mangalore	Panjimogar	176.28	0	0	3
113	Dakshina Kannada	Mangalore	Marakada	150.76	0	0	3
114	Dakshina Kannada	Mangalore	Addur	481.03	0	0	4
115	Dakshina Kannada	Mangalore	Tannirbhavi	373.35	0	0	4
116	Dakshina Kannada	Mangalore	Thiruvail	521.41	0	0	4
117	Dakshina Kannada	Mangalore	Padukody	125.85	0	0	3
118	Dakshina Kannada	Mangalore	Padukody	109.99	0	0	3
119	Dakshina Kannada	Mangalore	Ulaibettu	556.27	0	0	4
120	Dakshina Kannada	Mangalore	Pachanadi	416.06	0	0	3
121	Dakshina Kannada	Mangalore	Kavooru	458.12	0	0	3
122	Dakshina Kannada	Mangalore	Bangrakulur	238.98	0	0	3
123	Dakshina Kannada	Mangalore	Derebailu	476.92	0	0	3
124	Dakshina Kannada	Mangalore	Boluru	141.00	0	0	3
125	Dakshina Kannada	Mangalore	Mallur	251.66	0	0	4
126	Dakshina Kannada	Mangalore	Bondanthila	808.59	0	0	4
127	Dakshina Kannada	Mangalore	Neermarga	442.96	0	0	3
128	Dakshina Kannada	Mangalore	Padavu	909.93	0	0	3
129	Dakshina Kannada	Mangalore	Mangalore	3193.57	0	0	4
130	Dakshina Kannada	Mangalore	Kadri	340.42	0	0	4
131	Dakshina Kannada	Mangalore	Neermarga	826.41	0	0	4

132	Dakshina Kannada	Mangalore	Arkula	386.41	0	0	4
133	Dakshina Kannada	Mangalore	Maroli	192.22	0	0	4
134	Dakshina Kannada	Mangalore	Alape	314.06	0	0	4
135	Dakshina Kannada	Mangalore	Adyar	494.43	0	0	4
136	Dakshina Kannada	Mangalore	Kannuru	332.65	0	0	4
137	Dakshina Kannada	Mangalore	Kankanadi	307.76	0	0	4
138	Dakshina Kannada	Mangalore	Kannur H S	32.95	0	0	4
139	Dakshina Kannada	Mangalore	Kankanadi	133.58	0	0	4
140	Dakshina Kannada	Mangalore	Pavoor	924.49	0	0	4
141	Dakshina Kannada	Mangalore	Na	162.41	0	0	4
142	Dakshina Kannada	Mangalore	Bajal	303.40	0	0	4
143	Dakshina Kannada	Mangalore	Harekala	616.93	0	0	4
144	Dakshina Kannada	Mangalore	Boliyar	621.06	0	0	4
145	Dakshina Kannada	Mangalore	Amblamogaru	558.88	0	0	4
146	Dakshina Kannada	Mangalore	Munnuru	440.29	0	0	4
147	Dakshina Kannada	Mangalore	Kudugu	704.92	0	0	4
148	Dakshina Kannada	Mangalore	Konaje	1017.15	0	0	4
149	Dakshina Kannada	Mangalore	Belma	367.69	0	0	4
150	Dakshina Kannada	Mangalore	Peramannuru	346.89	0	0	4
151	Dakshina Kannada	Buntwal	Sangabettu	1069.52	0	0	4
152	Dakshina Kannada	Buntwal	Eliyanadugodu	507.23	0	0	3
153	Dakshina Kannada	Buntwal	Karpe	553.49	0	0	4
154	Dakshina Kannada	Buntwal	Ajjibettu	962.16	0	0	3
155	Dakshina Kannada	Buntwal	Kukkipady	918.80	0	0	4
156	Dakshina Kannada	Buntwal	Chennaihodi	604.87	0	0	3
157	Dakshina Kannada	Buntwal	Pilathabettu	917.59	0	0	3
158	Dakshina Kannada	Buntwal	Rayee	702.96	0	0	4

159	Dakshina Kannada	Buntwal	Irvathur	458.69	0	0	3
160	Dakshina Kannada	Buntwal	Koila	557.41	0	0	4
161	Dakshina Kannada	Buntwal	Pilimogru	488.69	0	0	3
162	Dakshina Kannada	Buntwal	Arla	701.72	0	0	4
163	Dakshina Kannada	Buntwal	Kudambettu	455.38	0	0	3
164	Dakshina Kannada	Buntwal	Budoli	315.05	0	0	3
165	Dakshina Kannada	Buntwal	Mudapadukodi	619.63	0	0	3
166	Dakshina Kannada	Buntwal	Panjikal	977.90	0	0	4
167	Dakshina Kannada	Buntwal	Badagabellur	886.89	0	0	4
168	Dakshina Kannada	Buntwal	Kariangala	594.60	0	0	4
169	Dakshina Kannada	Buntwal	Mudanadugodu	623.30	0	0	3
170	Dakshina Kannada	Buntwal	Kadabettu	467.03	0	0	3
171	Dakshina Kannada	Buntwal	Kavalpadur	1095.09	0	0	3
172	Dakshina Kannada	Buntwal	Kavalmudur	1566.16	0	0	3
173	Dakshina Kannada	Buntwal	Kuriyala	865.29	0	0	4
174	Dakshina Kannada	Buntwal	Tenkabellur	322.23	0	0	4
175	Dakshina Kannada	Buntwal	Bantwal	2044.96	0	0	4
176	Dakshina Kannada	Buntwal	Ammunje	641.33	0	0	4
177	Dakshina Kannada	Buntwal	Badagakajekde	695.97	0	0	3
178	Dakshina Kannada	Buntwal	Navur	956.74	0	0	3
179	Dakshina Kannada	Buntwal	Tenka Kajekar	646.34	0	0	3
180	Dakshina Kannada	Buntwal	Kallige	649.13	0	0	4
181	Dakshina Kannada	Buntwal	Devashyapadur	436.98	0	0	3
182	Dakshina Kannada	Buntwal	Devasyamuduru	260.24	0	0	3
183	Dakshina Kannada	Buntwal	Mermajal	518.53	0	0	4
184	Dakshina Kannada	Buntwal	Uli	1282.37	0	0	4
185	Dakshina Kannada	Buntwal	Muda	1074.74	0	0	4

186	Dakshina Kannada	Buntwal	Kodmannu	337.46	0	0	4
187	Dakshina Kannada	Buntwal	Narikombu	1183.53	0	0	4
188	Dakshina Kannada	Buntwal	Sarapady	1091.81	0	0	4
189	Dakshina Kannada	Buntwal	Maninalkur	1367.82	0	0	4
190	Dakshina Kannada	Buntwal	Padu	682.98	0	0	4
191	Dakshina Kannada	Buntwal	Shambur	628.05	0	0	4
192	Dakshina Kannada	Buntwal	Thumbbe	564.35	0	0	4
193	Dakshina Kannada	Buntwal	Balthila	1260.16	0	0	4
194	Dakshina Kannada	Buntwal	Munnur	713.83	0	0	4
195	Dakshina Kannada	Buntwal	Paanimangalore	603.44	0	0	4
196	Dakshina Kannada	Buntwal	Barimar	796.66	0	0	4
197	Dakshina Kannada	Buntwal	Sajipamuda	970.58	0	0	4
198	Dakshina Kannada	Buntwal	Sajipapadu	304.12	0	0	4
199	Dakshina Kannada	Buntwal	Sajipanadu	405.86	0	0	4
200	Dakshina Kannada	Buntwal	Kadeshvallya	1193.20	0	0	4
201	Dakshina Kannada	Buntwal	Amtoor	543.64	0	0	4
202	Dakshina Kannada	Buntwal	Gol Thamajal	628.49	0	0	4
203	Dakshina Kannada	Buntwal	Phajeer	1353.13	0	0	4
204	Dakshina Kannada	Buntwal	Biliyur	678.51	0	0	4
205	Dakshina Kannada	Buntwal	Mani	538.73	0	0	4
206	Dakshina Kannada	Buntwal	Chelur	351.92	0	0	4
207	Dakshina Kannada	Buntwal	Ira	1334.59	0	0	4
208	Dakshina Kannada	Buntwal	Manchi	1464.23	0	0	4
209	Dakshina Kannada	Buntwal	Peraje	539.15	0	0	4
210	Dakshina Kannada	Buntwal	Veerakamba	1163.24	0	0	4
211	Dakshina Kannada	Buntwal	Perne	574.64	0	0	4
212	Dakshina Kannada	Buntwal	Kedila	941.59	0	0	4

213	Dakshina Kannada	Buntwal	Ananthady	924.39	0	0	4
214	Dakshina Kannada	Buntwal	Bolanthur	720.07	0	0	4
215	Dakshina Kannada	Buntwal	Kurnad	630.94	0	0	4
216	Dakshina Kannada	Buntwal	Netlamudnur	555.43	0	0	4
217	Dakshina Kannada	Buntwal	Kariangala	638.36	0	0	4
218	Dakshina Kannada	Buntwal	Idkidu	765.27	0	0	4
219	Dakshina Kannada	Puttur	Kowkradi	2391.89	3	1	2
220	Dakshina Kannada	Puttur	Golithattu	1597.04	3	1	2
221	Dakshina Kannada	Puttur	Shirady	7085.50	3	1	1
222	Dakshina Kannada	Puttur	Bajathur	1936.44	3	0	2
223	Dakshina Kannada	Puttur	Konalu	798.96	3	0	2
224	Dakshina Kannada	Puttur	Nellyadi	1837.90	3	0	2
225	Dakshina Kannada	Puttur	Uppinangady	920.29	3	0	3
226	Dakshina Kannada	Puttur	Nekkiladi	657.26	3	0	4
227	Dakshina Kannada	Puttur	Alanhaya	625.05	3	1	2
228	Dakshina Kannada	Puttur	Noojibalthil	1497.97	3	0	2
229	Dakshina Kannada	Puttur	Kenaje	1949.26	3	0	1
230	Dakshina Kannada	Puttur	Hirebandady	1632.23	3	0	3
231	Dakshina Kannada	Puttur	Shirivagilu	3363.88	3	0	1
232	Dakshina Kannada	Puttur	Ichalampady	820.53	3	1	2
233	Dakshina Kannada	Puttur	Ramakunja	1166.01	3	0	3
234	Dakshina Kannada	Puttur	Kodimbady	547.30	3	0	4
235	Dakshina Kannada	Puttur	Ballya	2793.58	3	1	2
236	Dakshina Kannada	Puttur	Bellipadi	643.50	3	0	4
237	Dakshina Kannada	Puttur	Koila	2002.33	3	0	3
238	Dakshina Kannada	Puttur	Haleneranki	777.19	3	0	3
239	Dakshina Kannada	Puttur	Padnur	737.03	3	0	4

240	Dakshina Kannada	Puttur	Bannur	593.00	3	0	4
241	Dakshina Kannada	Puttur	Perabe	1200.31	3	0	3
242	Dakshina Kannada	Puttur	Renjiliady	884.01	3	0	1
243	Dakshina Kannada	Puttur	Kabaka	813.45	3	0	4
244	Dakshina Kannada	Puttur	Chickamudnur	875.56	3	0	4
245	Dakshina Kannada	Puttur	Kunthur	1451.91	3	0	2
246	Dakshina Kannada	Puttur	Shanthigod	1709.12	3	0	3
247	Dakshina Kannada	Puttur	Kombar	4046.73	3	1	1
248	Dakshina Kannada	Puttur	Alankar	1424.97	3	0	3
249	Dakshina Kannada	Puttur	Kudipadi	645.90	3	0	4
250	Dakshina Kannada	Puttur	Aithoor	3394.64	3	0	1
251	Dakshina Kannada	Puttur	Puttur	1022.12	3	0	4
252	Dakshina Kannada	Puttur	Narimogru	1310.71	3	0	3
253	Dakshina Kannada	Puttur	Kutrupadi	954.16	3	0	2
254	Dakshina Kannada	Puttur	Bilinele	6925.38	3	1	1
255	Dakshina Kannada	Puttur	Bantra	527.35	3	0	1
256	Dakshina Kannada	Puttur	Kemminje	749.87	3	0	4
257	Dakshina Kannada	Puttur	Savanur	1062.48	3	0	3
258	Dakshina Kannada	Puttur	Charwaka	1240.48	3	0	3
259	Dakshina Kannada	Puttur	Dolpady	1760.68	3	1	2
260	Dakshina Kannada	Puttur	Balnad	1904.98	3	0	4
261	Dakshina Kannada	Puttur	Kadaba	888.72	3	0	2
262	Dakshina Kannada	Puttur	Mundur	884.45	3	0	3
263	Dakshina Kannada	Puttur	Aryappu	2072.21	3	0	4
264	Dakshina Kannada	Puttur	Kudmar	594.26	3	0	3
265	Dakshina Kannada	Puttur	Kodimbaia	1768.08	3	0	1
266	Dakshina Kannada	Puttur	Sarve	963.94	3	0	3

267	Dakshina Kannada	Puttur	Punchappady	841.20	3	0	3
268	Dakshina Kannada	Puttur	Kaimana	530.67	3	0	3
269	Dakshina Kannada	Puttur	Nekkilady	702.23	3	0	1
270	Dakshina Kannada	Puttur	Belandur	560.32	3	0	3
271	Dakshina Kannada	Puttur	Kaniyur	924.37	3	0	3
272	Dakshina Kannada	Puttur	Kedambady	954.52	3	0	4
273	Dakshina Kannada	Puttur	Palthady	1033.98	3	0	3
274	Dakshina Kannada	Puttur	Keyyur	2022.48	3	0	4
275	Dakshina Kannada	Puttur	Kolthige	3130.51	3	0	3
276	Dakshina Kannada	Puttur	Madnur	1635.55	3	0	4
277	Dakshina Kannada	Sulya	Yedamangala	1673.79	1	0	1
278	Dakshina Kannada	Sulya	Peruvaje	1130.55	1	0	3
279	Dakshina Kannada	Sulya	Murulya	1436.69	1	0	1
280	Dakshina Kannada	Sulya	Kenya	818.32	1	0	1
281	Dakshina Kannada	Sulya	Kodiyala	1030.33	1	0	3
282	Dakshina Kannada	Sulya	Balpa	2243.66	1	1	1
283	Dakshina Kannada	Sulya	Yenmur	630.57	1	0	1
284	Dakshina Kannada	Sulya	Yenekul	1162.53	1	0	1
285	Dakshina Kannada	Sulya	Aivathoklu	913.48	1	0	1
286	Dakshina Kannada	Sulya	Subramanya	3475.74	1	1	1
287	Dakshina Kannada	Sulya	Balila	631.00	1	0	1
288	Dakshina Kannada	Sulya	Na	757.11	1	1	1
289	Dakshina Kannada	Sulya	Bellare	1044.13	1	0	3
290	Dakshina Kannada	Sulya	Muppirya	501.33	1	0	1
291	Dakshina Kannada	Sulya	Kalmadka	1263.11	1	0	1
292	Dakshina Kannada	Sulya	Arapadi	876.57	1	0	1
293	Dakshina Kannada	Sulya	Guthigar	2686.00	1	0	1

294	Dakshina Kannada	Sulya	Pambethady	676.23	1	0	1
295	Dakshina Kannada	Sulya	Nalkur	2363.38	1	0	1
296	Dakshina Kannada	Sulya	Kalanja	760.05	1	1	1
297	Dakshina Kannada	Sulya	Kuthkunja	1024.16	1	1	1
298	Dakshina Kannada	Sulya	Ainakidu	1583.52	1	0	1
299	Dakshina Kannada	Sulya	Aivarnad	2323.28	1	0	4
300	Dakshina Kannada	Sulya	Amarapadnur	1165.04	1	0	4
301	Dakshina Kannada	Sulya	Amaramudnur	2277.48	1	0	4
302	Dakshina Kannada	Sulya	Devachalla	3531.19	1	1	2
303	Dakshina Kannada	Sulya	Hariharapallathadka	1281.38	1	1	1
304	Dakshina Kannada	Sulya	Balgodu	3911.62	1	1	1
305	Dakshina Kannada	Sulya	Kallamogru	1367.04	1	0	1
306	Dakshina Kannada	Sulya	Madapady	5631.87	1	1	1
307	Dakshina Kannada	Sulya	Kalmakar	1837.94	1	0	1
308	Chikmagaluru	Mudigere	Alakha Coffee Estate	1755.74	1	0	2
309	Chikmagaluru	Mudigere	Baluru	1648.26	1	0	2
310	Chikmagaluru	Mudigere	Balgi	833.34	1	0	2
311	Chikmagaluru	Mudigere	Na	33.38	1	0	2
312	Chikmagaluru	Mudigere	Durgadahalli	920.69	1	1	2
313	Chikmagaluru	Mudigere	Mudgundi	2421.28	1	0	1
314	Chikmagaluru	Mudigere	Malemane Coffee Estate	186.13	1	0	2
315	Chikmagaluru	Mudigere	Halagadaka State Forest	98.40	1	0	1
316	Chikmagaluru	Mudigere	Attigere	1406.55	1	1	1
317	Chikmagaluru	Mudigere	Taruve	796.01	1	1	1
318	Chikmagaluru	Mudigere	Kogile	1457.93	1	1	1
319	Chikmagaluru	Mudigere	Kogile Boremale Coffee Estate	387.01	1	0	1

320	Chikmagaluru	Mudigere	Gotti	2637.38	1	1	1
321	Chikmagaluru	Mudigere	Urubage	3017.11	1	1	2
322	Chikmagaluru	Mudigere	Byarapura	4000.70	1	1	1
323	Chikmagaluru	Mudigere	Byarapura Coffee Estate	987.96	1	1	1
324	Hassan	Sakaleshpur	Achanahalli	1618.42	1	1	1
325	Hassan	Sakaleshpur	Jambardi	1002.28	1	0	1
326	Hassan	Sakaleshpur	Agani	1368.41	1	1	1
327	Hassan	Sakaleshpur	Maragunda	406.85	1	1	2
328	Hassan	Sakaleshpur	Agalahalli	517.55	1	0	3
329	Hassan	Sakaleshpur	Kumarihalli	7423.97	1	1	1
330	Hassan	Sakaleshpur	Dabbegadde	151.06	1	0	3
331	Hassan	Sakaleshpur	Kyamanahalli	969.71	1	0	1
332	Hassan	Sakaleshpur	Hodchhalli	575.28	1	0	1
333	Hassan	Sakaleshpur	Hennalli	378.65	1	0	3
334	Hassan	Sakaleshpur	Ganadahole	222.15	1	0	3
335	Hassan	Sakaleshpur	Mavinakolu	103.76	1	0	3
336	Hassan	Sakaleshpur	Raxdi Coffee Estate	386.37	1	0	1
337	Hassan	Sakaleshpur	Hebbasale	951.07	1	0	3
338	Hassan	Sakaleshpur	Kumaradi	618.37	1	0	1
339	Hassan	Sakaleshpur	Kadumane Coffee Estate	2526.50	1	0	1
340	Hassan	Sakaleshpur	Nadahalli	1131.43	1	0	1
341	Hassan	Sakaleshpur	Anemahal	207.68	1	0	3
342	Hassan	Sakaleshpur	Devihalli	207.28	1	1	3
343	Hassan	Sakaleshpur	Donigalu	188.36	1	0	3
344	Hassan	Sakaleshpur	Kalgane	166.25	1	0	3
345	Hassan	Sakaleshpur	Kumbardicoffeeestate	139.10	1	0	3
346	Hassan	Sakaleshpur	Na	362.64	1	1	1

347	Hassan	Sakaleshpur	Kesaganahalli	598.99	1	1	3
348	Hassan	Sakaleshpur	Manjanahalla Coffee Estate	830.66	1	0	1
349	Hassan	Sakaleshpur	Manibigati Coffee Estate	336.15	1	0	1
350	Hassan	Sakaleshpur	Heggadde	5209.26	1	1	1
351	Hassan	Sakaleshpur	Hullahalli Coffee Estate	41.02	1	0	3
352	Hassan	Sakaleshpur	Arekere	560.80	1	0	3
353	Hassan	Sakaleshpur	Kadumane	744.48	1	1	1
354	Hassan	Sakaleshpur	Kyanahalli	338.37	1	0	3
355	Hassan	Sakaleshpur	Bykaravalli	494.63	1	0	3
356	Hassan	Sakaleshpur	Bugadahalli	475.67	1	0	3
357	Hassan	Sakaleshpur	Haragarahalli	347.97	1	0	3
358	Hassan	Sakaleshpur	Aluvalli	994.17	1	1	1
359	Hassan	Sakaleshpur	Kelagina Manchahalli	422.26	1	0	3
360	Hassan	Sakaleshpur	Bommanakere	346.38	1	0	3
361	Hassan	Sakaleshpur	Chinnahalli	515.63	1	0	3
362	Hassan	Sakaleshpur	Kadagaravalli	1090.66	1	1	1
363	Hassan	Sakaleshpur	Kagenari State Forest	3078.51	1	0	1
364	Hassan	Sakaleshpur	Karadigala	479.30	1	0	3
365	Hassan	Sakaleshpur	Kadagaravalli Coffee Estate	68.60	1	0	1
366	Hassan	Sakaleshpur	Volalahalli	266.46	1	0	3
367	Hassan	Sakaleshpur	Yadekumari	501.53	1	1	1
368	Hassan	Sakaleshpur	Hongadahalla	748.31	1	1	1
369	Hassan	Sakaleshpur	Belehalla	712.62	1	0	1
370	Hassan	Sakaleshpur	Hosahalli	485.42	1	1	1
371	Hassan	Sakaleshpur	Bobbanahalli	369.16	1	0	3
372	Hassan	Sakaleshpur	Hadalhalli	986.23	1	0	2
373	Hassan	Sakaleshpur	Marakalli	857.39	1	0	2

374	Hassan	Sakaleshpur	Hethur	753.24	1	0	2
375	Hassan	Sakaleshpur	Jedigadde	547.36	1	1	1
376	Hassan	Sakaleshpur	Bettekumari	1275.50	1	0	1
377	Hassan	Sakaleshpur	Hadya	728.33	1	0	2
378	Hassan	Sakaleshpur	Yathahalla	1310.17	1	1	1
379	Hassan	Sakaleshpur	Attihalli	610.22	1	1	1
380	Hassan	Sakaleshpur	Yaragalli	792.58	1	1	2
381	Hassan	Sakaleshpur	Bisle State Forest	2481.54	1	0	1
382	Hassan	Sakaleshpur	Bachalli	315.38	1	0	2
383	Hassan	Sakaleshpur	Boranamane	352.05	1	0	1
384	Hassan	Sakaleshpur	Halliyur	222.13	1	0	2
385	Hassan	Sakaleshpur	Karagur	379.67	1	0	2
386	Hassan	Sakaleshpur	Na	120.59	1	1	2
387	Hassan	Sakaleshpur	Maragathur	262.34	1	1	2
388	Hassan	Sakaleshpur	Begadhalli	240.81	1	0	2
389	Hassan	Sakaleshpur	Arni	1189.55	1	0	1
390	Hassan	Sakaleshpur	Vanagur	957.55	1	1	2
391	Hassan	Sakaleshpur	Palahalli	221.86	1	0	2
392	Hassan	Sakaleshpur	Mankanahalli	730.50	1	1	1
393	Hassan	Sakaleshpur	Goddu	512.57	1	0	2
394	Hassan	Sakaleshpur	Arini Coffee Estate	604.41	1	1	1
395	Hassan	Sakaleshpur	Vanagur Coffee Estate	92.03	1	0	2
396	Hassan	Sakaleshpur	Hadalkerehalli	186.49	1	0	2
397	Hassan	Sakaleshpur	Kangahalli	488.91	1	0	2
398	Hassan	Sakaleshpur	Banagere	642.03	1	1	2
399	Hassan	Sakaleshpur	Na	306.93	1	1	1
400	Hassan	Sakaleshpur	Tambalagere	433.04	1	0	2

401	Hassan	Sakaleshpur	Magere	780.40	1	0	2
402	Udupi	Karkal	Idu	3065.78	1	0	1
403	Udupi	Karkal	Nuralbettu	2169.37	1	0	2
404	Udupi	Karkal	Renjala	1797.52	1	0	4
405	Udupi	Karkal	Nellikara	1139.06	1	0	2
406	Udupi	Karkal	Beluvai	2434.34	1	0	4
407	Udupi	Karkal	Panapila	704.12	1	0	2
408	Udupi	Karkal	Kellaputtige	468.57	1	0	4
409	Udupi	Karkal	Daregudde	728.57	1	0	4
410	Udupi	Karkal	Mudumarnad	922.40	1	0	4
411	Udupi	Karkal	Padumarnadu	1166.62	1	0	4
412	Udupi	Karkal	Mantradi	897.29	1	0	2
413	Udupi	Karkal	Valpadi	1051.03	1	0	2
414	Udupi	Karkal	Mudukonaje	929.35	1	0	4
415	Udupi	Karkal	Marur	1628.04	1	0	2
416	Udupi	Karkal	Padukonaje	1179.38	1	0	4
417	Udupi	Karkal	Mudbidri	1318.81	1	0	4
418	Udupi	Karkal	Kallabettu	518.52	1	0	4
419	Udupi	Karkal	Karinje	919.07	1	0	4
420	Udupi	Karkal	Hosabettu	1004.21	1	0	4
421	Udupi	Karkal	Todar	977.73	1	0	4
422	Udupi	Karkal	Punchamogru	976.44	1	0	4
423	Udupi	Karkal	Iruvail	949.67	1	0	4
424	Kodagu	Somvarpet	Kumaralli & Forest	4789.28	1	0	1
425	Kodagu	Somvarpet	Kundahalli	890.54	1	0	2
426	Kodagu	Somvarpet	Bettadalli	790.24	1	0	2
427	Kodagu	Somvarpet	Kothanalli	1501.98	1	0	1

428	Kodagu	Somvarpet	Santhalli	967.63	1	0	2
429	Kodagu	Somvarpet	Surlabi	6626.69	1	1	1
430	Kodagu	Somvarpet	Haraga	836.12	1	0	2
431	Kodagu	Mercara	Hammiyala	4409.81	1	1	1
432	Kodagu	Mercara	Kaloor	6084.68	1	0	1
433	Kodagu	Mercara	Galibeedu & Forest	3800.64	1	0	1

As per three reports (WGEEP, HLWG, IISc-ENVIS) 50 villages are gained status of ESR-1 and shown in Table b. HLWG has not assigned 226 villages of basin (which are part of Western Ghats) under any status signifies the lacunas compared to WGEEP, IISc ENVIS reports. WGEEP has assigned Puttur taluk as ESR-3 status because of least forest cover as compared to other taluks. WGEEP has not considered Bantwal and Mangalore taluks since they fall outside Western Ghats with least forest cover.

Table b: Villages of ESR 1 based on three reports.

SNO	DISTRICT	TALUK_NAME	LOCATION	AREA	ESR_WGEEP	ESR_HLWG	ESR_IIScENVIS
1	DAKSHINA KANNADA	Belthangadi	Malavanthige	6483.25	1	1	1
2	DAKSHINA KANNADA	Belthangadi	Naravi	2774.13	1	1	1
3	DAKSHINA KANNADA	Belthangadi	Kuthlur	2645.25	1	1	1
4	DAKSHINA KANNADA	Belthangadi	Sulkerimogru	1773.03	1	1	1
5	DAKSHINA KANNADA	Belthangadi	Shirlal	2494.24	1	1	1
6	DAKSHINA KANNADA	Belthangadi	Navur	6134.26	1	1	1
7	DAKSHINA KANNADA	Belthangadi	Savanalu	2320.63	1	1	1
8	DAKSHINA KANNADA	Belthangadi	Charmadi	5645.68	1	1	1
9	DAKSHINA KANNADA	Belthangadi	Na	317.78	1	1	1
10	DAKSHINA KANNADA	Belthangadi	Sulkeri	526.46	1	1	1

11	DAKSHINA KANNADA	Belthangadi	Navara	550.05	1	1	1
12	DAKSHINA KANNADA	Belthangadi	Na	58.69	1	1	1
13	DAKSHINA KANNADA	Belthangadi	Neriya	10758.34	1	1	1
14	DAKSHINA KANNADA	Belthangadi	Na	179.45	1	1	1
15	DAKSHINA KANNADA	Belthangadi	Puduvettu	3626.91	1	1	1
16	DAKSHINA KANNADA	Belthangadi	Shishila	4892.95	1	1	1
17	DAKSHINA KANNADA	Belthangadi	Kalanja	5039.68	1	1	1
18	DAKSHINA KANNADA	Sulya	Balpa	2243.66	1	1	1
19	DAKSHINA KANNADA	Sulya	Subramanya	3475.74	1	1	1
20	DAKSHINA KANNADA	Sulya	Na	757.11	1	1	1
21	DAKSHINA KANNADA	Sulya	Kalanja	760.05	1	1	1
22	DAKSHINA KANNADA	Sulya	Kuthkunj	1024.16	1	1	1
23	DAKSHINA KANNADA	Sulya	Hariharapallathadka	1281.38	1	1	1
24	DAKSHINA KANNADA	Sulya	Balgodu	3911.62	1	1	1
25	DAKSHINA KANNADA	Sulya	Madapady	5631.87	1	1	1
26	CHIKMAGALURU	Mudigere	Attigere	1406.55	1	1	1
27	CHIKMAGALURU	Mudigere	Taruve	796.01	1	1	1
28	CHIKMAGALURU	Mudigere	Kogile	1457.93	1	1	1
29	CHIKMAGALURU	Mudigere	Gotti	2637.38	1	1	1
30	CHIKMAGALURU	Mudigere	Byarapura	4000.7	1	1	1
31	CHIKMAGALURU	Mudigere	Byarapura Coffee Estate	987.96	1	1	1
32	HASSAN	Sakaleshpur	Achanahalli	1618.42	1	1	1
33	HASSAN	Sakaleshpur	Agani	1368.41	1	1	1
34	HASSAN	Sakaleshpur	Kumarihalli	7423.97	1	1	1
35	HASSAN	Sakaleshpur	Na	362.64	1	1	1
36	HASSAN	Sakaleshpur	Heggadde	5209.26	1	1	1
37	HASSAN	Sakaleshpur	Kadumane	744.48	1	1	1

38	HASSAN	Sakaleshpur	Aluvalli	994.17	1	1	1
39	HASSAN	Sakaleshpur	Kadagaravalli	1090.66	1	1	1
40	HASSAN	Sakaleshpur	Yadekumari	501.53	1	1	1
41	HASSAN	Sakaleshpur	Hongadahalla	748.31	1	1	1
42	HASSAN	Sakaleshpur	Hosahalli	485.42	1	1	1
43	HASSAN	Sakaleshpur	Jedigadde	547.36	1	1	1
44	HASSAN	Sakaleshpur	Yathahalla	1310.17	1	1	1
45	HASSAN	Sakaleshpur	Attihalli	610.22	1	1	1
46	HASSAN	Sakaleshpur	Mankanahalli	730.5	1	1	1
47	HASSAN	Sakaleshpur	Arini Coffee Estate	604.41	1	1	1
48	HASSAN	Sakaleshpur	Na	306.93	1	1	1
49	KODAGU	Somvarpet	Surlabi	6626.69	1	1	1
50	KODAGU	Mercara	Hammiyala	4409.81	1	1	1